

ALLIANT

DENTAL CHAIR

GP / ORTHO / PEDO / SURGERY

Standard Features

- Hydraulic drive
- Low 13.5" seat height
- Internal umbilical chase
- 60° rotation
- Dual integrated touch pad controls
- Automatic position (AP) – 4 programmable positions
- Last position (LP) memory
- Automatic return (AR)
- Solid-state electronics
- Premium vinyl upholstery
- Easy-care, replaceable upholstery
- Removable swing-out armrests
- Synchronized recline & tilt
- All metal frame

The Alliant is Royal's flagship chair of superior luxury and quality, offered at an affordable price. The ergonomic design features a contoured backrest with built-in arm support and Royal's magnetic headrest to effectively articulate the oral cavity while maintaining proper posture.



TOUCH CONTROLS

Mirror image touch pads on both arm rests



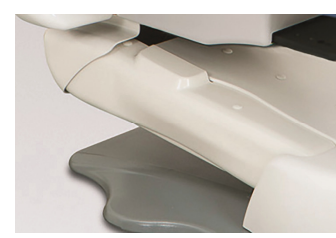
SLIM BACK

With slings (optional)



SURGERY HEADREST

(optional)



UMBILICAL CHASE

Hidden chase for unit tubings



betterDentistry | byDesign

www.royaldentalgroup.com

Royal®