

DATE: \_\_\_\_\_  
 DEALER: \_\_\_\_\_  
 SALES PERSON: \_\_\_\_\_  
 PREPARED FOR: \_\_\_\_\_  
 PRS REP: \_\_\_\_\_

Quantity

C-Series  
 Platinum

**CHECK LIST / QUESTIONS**

- \_\_\_\_\_ Overall width?
- \_\_\_\_\_ Against wall: left/rt/back?
- y n Cup & towel above sink?
- y n Glove dispenser(s)?
- y n Sharps container?
- y n Soft close drawers?
- \_\_\_\_\_ Countertop material?
- \_\_\_\_\_ Air/Tapmaster foot cntl?
- l r Sink on left or right?

**NOTES / SPECIAL INSTRUCTIONS**

---

---

---

---

---

---

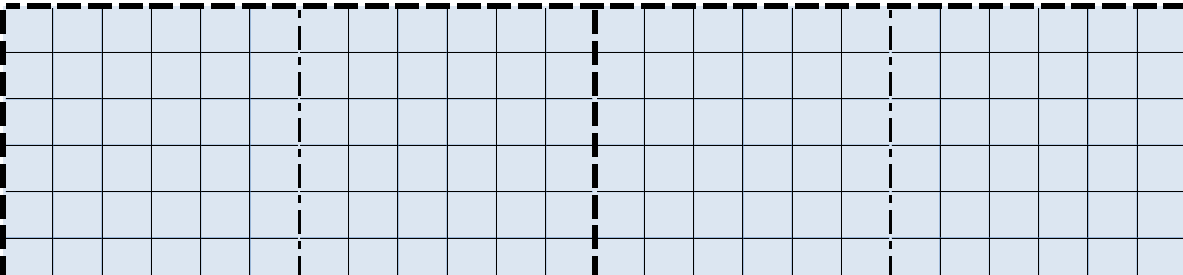
---

---

---

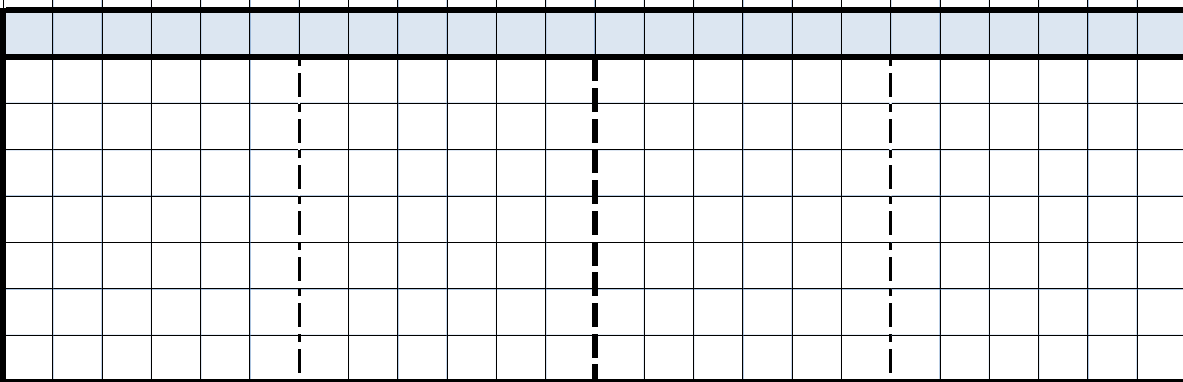
---

UPPER

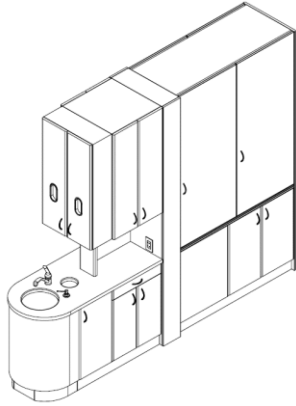


C-TOP

LOWER



BASE



DATE: \_\_\_\_\_  
 DEALER: \_\_\_\_\_  
 SALES PERSON: \_\_\_\_\_  
 PREPARED FOR: \_\_\_\_\_  
 PRS REP: \_\_\_\_\_

Quantity       C-Series  
 Platinum

**NOTES / SPECIAL INSTRUCTIONS**

---



---



---



---



---



---



---

**CHECK LIST / QUESTIONS**

\_\_\_\_\_ X-ray type?  
 y n Plexiglass door inserts?  
 y n Light mounting brackets?  
 y n LED task lighting?  
 y n Glove dispenser(s)?  
 \_\_\_\_\_ Countertop material?  
 y n Soft close drawers?  
 \_\_\_\_\_ Knee space or storage?  
 y n Air/Tapmaster foot cntl?  
 y n Electrical outlets? (C-series)

Sink on LEFT or RIGHT? (draw below with sink on left, Biotec will transpose if required)

