

THE MODULAR SYSTEM OF DENTAL CABINETS

Contractor Series Cabinets

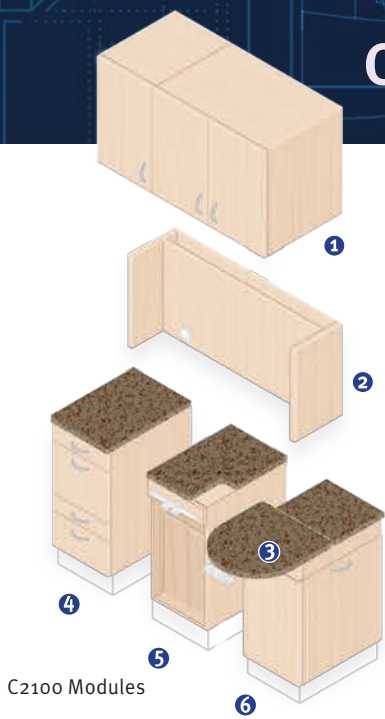


BIOTEC

Operatory Furnishings,
Modular Cabinets and
Dental Units

ROYAL
DENTAL GROUP
www.royaldentalgroup.com

CONTRACTOR SERIES CABINETS
C2100 Treatment Centers



Simply choose the modules you need, then select accent and countertop colors.

typical configuration

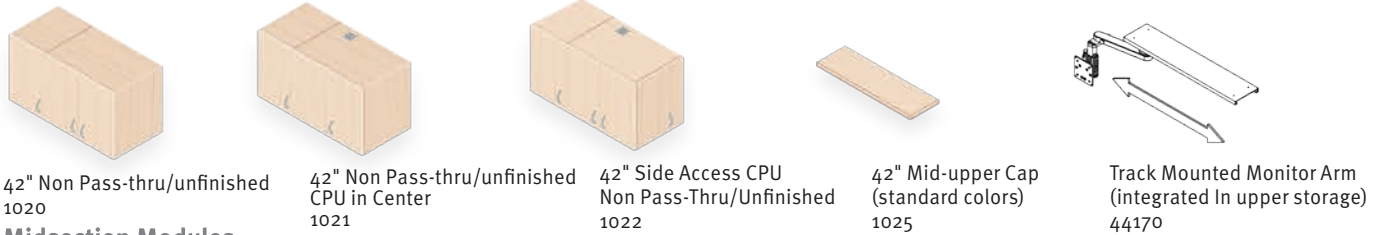
- ① Upper Storage Module (1020)
- ② Midsection Stiles and Back Panel (1001)
- ③ C2120 Pull-Out Worksurface (1026)
- ④ Appliance Module (1015)
- ⑤ Doctor's Utility Module (1019)
- ⑥ Side Access Slide-Out Module (1024)

typ. config. 42.72" wide x 74.65" high
 counter height 32", depth 21" (w/o tablet)



C2120 Treatment Center

Upper Storage Modules standard features - 2 adjustable shelves in double door, 1 adjustable shelf in single door



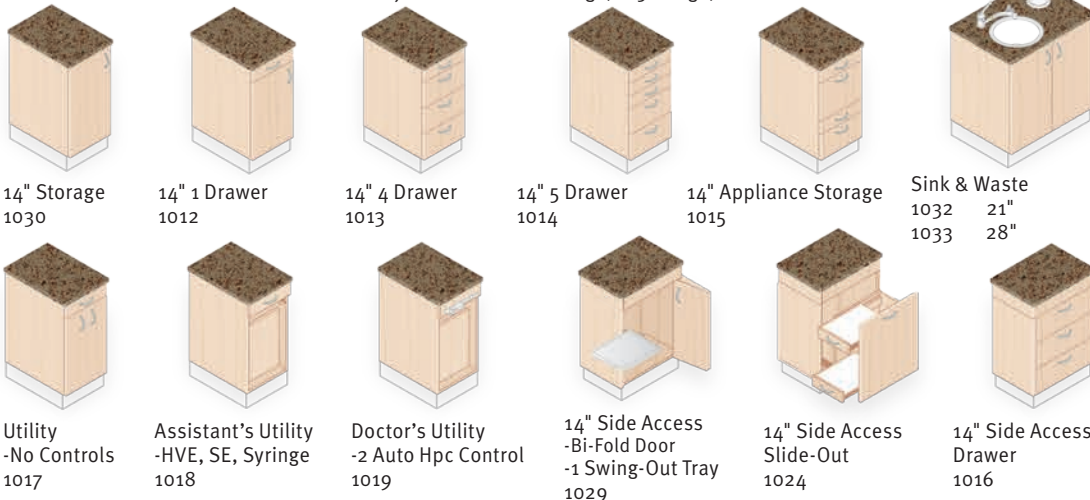
Midsection Modules



Worksurface Options



Lower Modules standard features - 1 adjustable shelf in storage, 165° hinge, full-extension drawer slides



C2100 Options

- 25501 Patient Water System
- 33495 Air/Water Quick Disconnects Kit
- 32935 Analgesia Bracket Flush Mount
- 32934 Analgesia Bracket Post Mount
- 33681 Flush Mount Clock/Timer
- 20030 Automatic Handpiece (addl)
- 31268SF HVE Valve with Tubing (addl)
- 32874SF Syringe Air/Water (addl)
- 35420 Flush Mt. Porter MXR with Bracket
- 35124 Flush Mt. Porter MXR with AVS & Bracket
- 40494 LED Task Lighting (each)
- 40135 Swing-out Tray Assembly - Right
- 40136 Swing-out Tray Assembly - Left
- 20280 Soft Close Doors (per door)
- 20281 Soft Close Drawers (per drawer)
- 44078 Air Activated-Foot Controlled Faucet
- 44079 Tapmaster-Foot Controlled Faucet
- 1031 Pass-Through/Finished Back -Full Height
- 00000 Wilsonart Gibraltar Countertop

C2300 Side Cabinets



Upper Storage Modules standard features - 2 adjustable shelves, 28" height, Easy Mount rail system



Wall Mount Single Door
1100 10.5"
1101 14"



Wall Mount Double Door
1102 21"
1104 28"



Wall Mount Cup & Towel
1105 21"
1107 28"

C2300 Options

- 35566 Sharps Container (1.7 qt in countertop)
- 44078 Air-activated Foot-controlled Faucet
- 44079 Tapmaster Foot-controlled Faucet
- 20280 Soft Close Doors (per door)
- 20281 Soft Close Drawers (per door)
- 20201 Glove Dispenser (each)
- 42803 CPU Cooling Fan (each)
- 41633 CPU Vent (each)
- 00000 Wilsonart Gibraltar Countertop

Lower Modules standard features - 1 adjustable shelf in storage, 165° hinge, full-extension drawer slides



Single Door Storage
1056 14"



1- Drawer
1059 14"
1060 21"
1061 28"



4- Drawer
1062 14"
1063 21"
1064 28"



5- Drawer
1065 14"
1066 21"
1067 28"



Appliance
1068 14"



Sink and Waste
1071 21"
1072 28"



Double Door Storage
1057 21"
1058 28"



35" Knee Space
1070

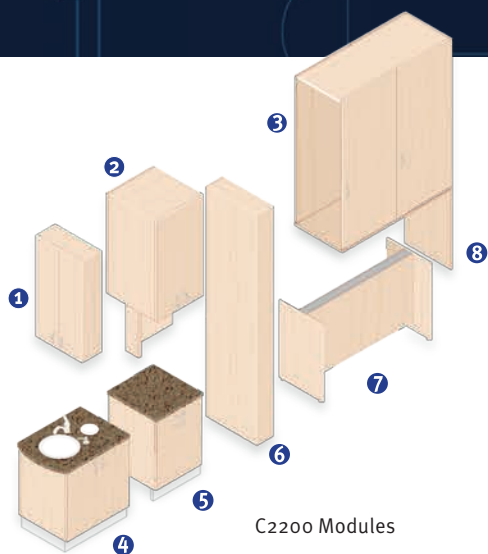


14" Quarter-Round
Knee Space
1069



14" Angled
Knee Space
1076

C2200 Central Cabinets



C2200 Modules

typical configuration

- ① 21" Cup & Towel (1077)
- ② 21" Upper Pass-Thru Storage (1078)
- ③ Bi-fold X-ray Storage (1079)
- ④ 28" Sink & Waste (1082)
- ⑤ 21" Split 4 Drawer (1088)
- ⑥ X-ray Wall (1097)
- ⑦ 49" Knee Space (1089)
- ⑧ End Panel (1099)

typ. config. 108" wide x 88.9" high
counter height 32", depth 21"



C2200 Central Cabinet

Upper Storage Modules standard features - 2 adjustable shelves, 28" height, Easy Mount rail system



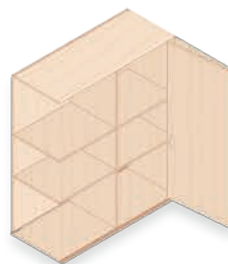
21" Cup & Towel Storage
1077



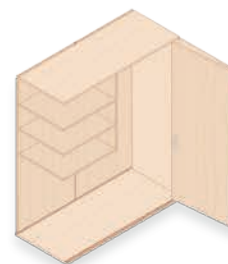
21" Upper Pass-Thru Storage
-3 Adjustable Shelves
1078



Bi-Fold X-Ray Enclosure
1079



Bi-Fold X-Ray Enclosure Shelving, No X-Ray
1080



Bi-Fold X-Ray Enclosure -Shelving w/ X-Ray
1081

Lower Modules Head-end (includes countertop) standard features - 1 adjustable shelf in storage, 165° hinge, full-extension drawer slides



28" Sink / Waste WC6 Waste System
1082



21" Storage Non Pass-thru
1083



21" 1 Drawer
1084



21" 4 Drawer
1085



21" 5 Drawer
1086

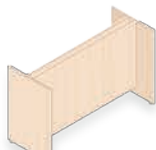


21" Appliance
1087



21" Split 4 Drawer
1088

Lower Modules Toe-end (no countertop) standard features - 1 adjustable shelf in storage, 165° hinge, full-extension drawer slides



49" Kneespace
1089



21" Storage Non Pass-thru
1090



21" 1 Drawer
1091



21" 4 Drawer
1092



21" 5 Drawer
1093



21" Appliance
1094



21" Split 4 Drawer
1095



28" Pass-thru Storage
1096



X-ray Wall Assembly w/ Welded Steel Frame
1097

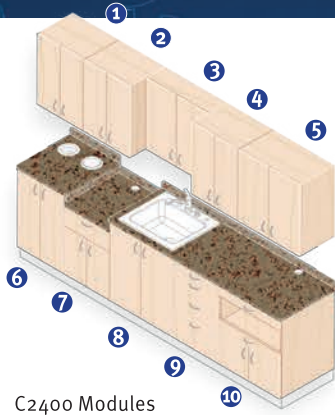


Full Height End Panel
1099

C2200 Options

- 35566 Sharps Container
- 44078 Air Activated-Foot Controlled Faucet
- 44079 Tapmaster-Foot Controlled Faucet
- 20280 Soft Close Doors (per door)
- 20281 Soft Close Drawers (per drawer)
- 20201 Glove Dispenser (each)
- 00000 Wilsonart Gibraltar Countertop

CONTRACTOR SERIES CABINETS
C2400 Sterilization Cabinets



C2400 Modules

typical configuration

- ① 21" Wall Mount (1102)
- ② 21" Wall Mount (1102)
- ③ 28" Wall Mount Cup & Towel (1107)
- ④ 21" Wall Mount (1102)
- ⑤ 28" Wall Mount (1104)
- ⑥ 21" Storage-optional Waste & Sharps (1110)
- ⑦ 21" Ultrasonic (1118)
- ⑧ 28" Sink (1114)
- ⑨ 21" 4 Drawer (1116)
- ⑩ 28" Steri Module (1119)

typ. 10' config. 118.9" wide x 83.3" high
 counter height 36", depth 24.8"



C2410 Sterilization Center

Upper Storage Modules standard features - 2 adjustable shelves, 28" height, Easy Mount Rail System



Wall Mount Single Door
 1100 10.5"
 1101 14"



Wall Mount Double Door
 1102 21"
 1103 24"
 1104 28"



Wall Mount Cup & Towel
 1105 21"
 1106 24"
 1107 28"

C2400 Options

- 35566 Sharps Container (1.7 qt in c'top)
- 35567 Biohazard Waste Chute (in c'top)
- 44141 Waste Ring (in c'top)
- 33681 Flush Mount Clock/Timer
- 20201 Glove Dispenser (Each)
- 25334SF HVE Valve with 10' Tubing
- 40494 LED Task Lighting (each)
- 20280 Soft Close Doors (price per door)
- 20281 Soft Close Drawers (price per drawer)
- 44078 Air Activated-Foot Controlled Faucet
- 44079 Tapmaster-Foot Controlled Faucet
- 20061 Clear-Plexiglass Door Insert (each)
- 20282 Blue-Plexiglass Door Insert (each)
- 20283 Red-Plexiglass Door Insert (each)
- 00000 Wilsonart Gibraltar Countertop

Lower Modules standard features - 1 adjustable shelf in storage, 165° hinges, full-extension drawer slides



Single Door Storage
 1108 10.5"
 1109 14"



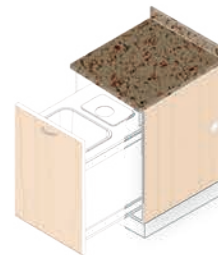
Double Door Storage
 1110 21"
 1111 24"
 1112 28"



Sink
 1113 24"
 1114 28"



4 Drawer
 1115 14"
 1116 21"
 1117 28"



Slide-out Waste/Sharps
 1120 21"



Ultrasonic Module
 1118 21"



Steri Module-36"H
 1119 28"



Sterilizer Tower
 1125 21"
 1124 28"



Double Sterilizer Tower
 1127 21"
 1126 28"



Single Door Storage Tower
 1121 14"



Double Door Storage Tower
 1122 21"
 1123 28"

Contractor Series Cabinets by Biotec – the Choice for the Dental Professional

CONTRACTOR SERIES CABINETS STANDARD FEATURES

Quality, Full-extension Drawer Slides

- Provides increased access to drawer contents
- Quality ball bearing slides with a smooth feel

Utility/Wiring Management

- Pre-engineered for easy integration of technology including power cords, cables, USB ports and nitrous tubing.

Dental Module System

- Interchangeable modules that are engineered specifically for dental operatories
- Array of modules that provide storage and easy access to all your dental instruments & devices

Base Board Assembly

- Made from 1" thick water resistant material

Serial Number

- Each Contractor Series cabinet comes with a specific dental equipment serial number for legitimate tax deduction

Door/Drawer Fronts

- All doors & drawers have a 3mm PVC edge. This provides increased durability along with a soft feel
- Contractor Series edging is color matched
- Quality brushed chrome door/drawer pull provides durability & contemporary look
- Concealed, Euro-style, self-closing door hinges

Doctor & Assistant Instrumentation

- Fully engineered & integrated control systems for the Doctor & Assistant
- HVE, SE, Syringe and tubing

Pull-Out Work Surface

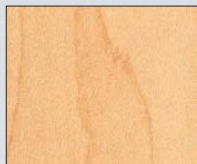
- Quality ball bearing slides
- Durable high pressure laminate in countertop color

Optional Installed Dental Accessories

- Factory installed nitrous systems
- Patient clean water system with city/bottle switch
- Dental drawer inserts
- CPU storage with USB cooling fan
- Plexiglas windows in doors
- Factory installed handpiece illumination
- Flushmount Clock/Timer
- Cut-outs for dental communication systems
- Wide selection of factory-installed monitor mounts
- LED task lighting

CONTRACTOR SERIES CABINETS STANDARD FINISHES

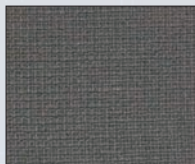
ACCENT



Kensington Maple



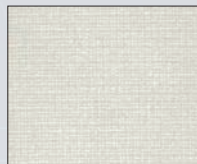
Blond Echo



Steel Mesh



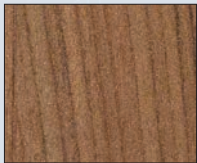
Classic Linen



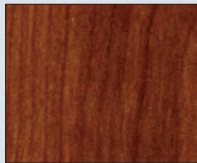
Sheer Mesh



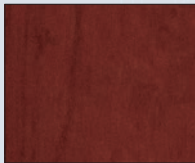
Crisp Linen



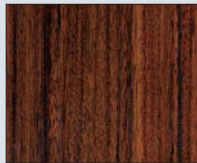
River Cherry



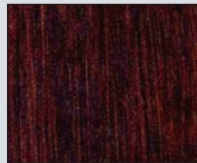
Amber Cherry



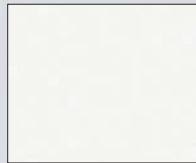
Biltmore Cherry



Rio



Cocobala



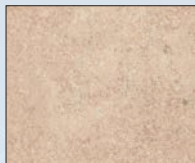
Frosty White



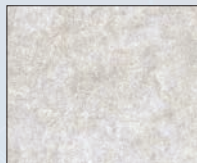
~~Mercury Glass~~



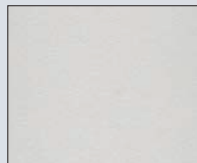
Titanium EV



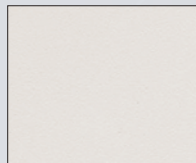
Tan Soapstone



Natural Cotton

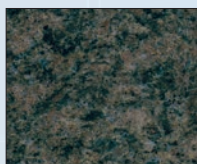


Fashion Grey

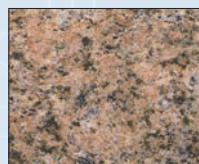


Neutral Light

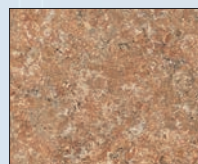
COUNTERTOP



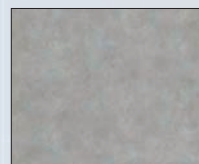
Bella Venito



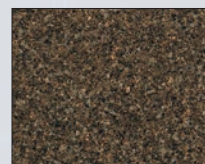
Bella Capri



Sedona Trail



Salentina Trail



Bronze Eclipse

Colors and patterns are approximate, for general reference only. Refer to sample chips before ordering.