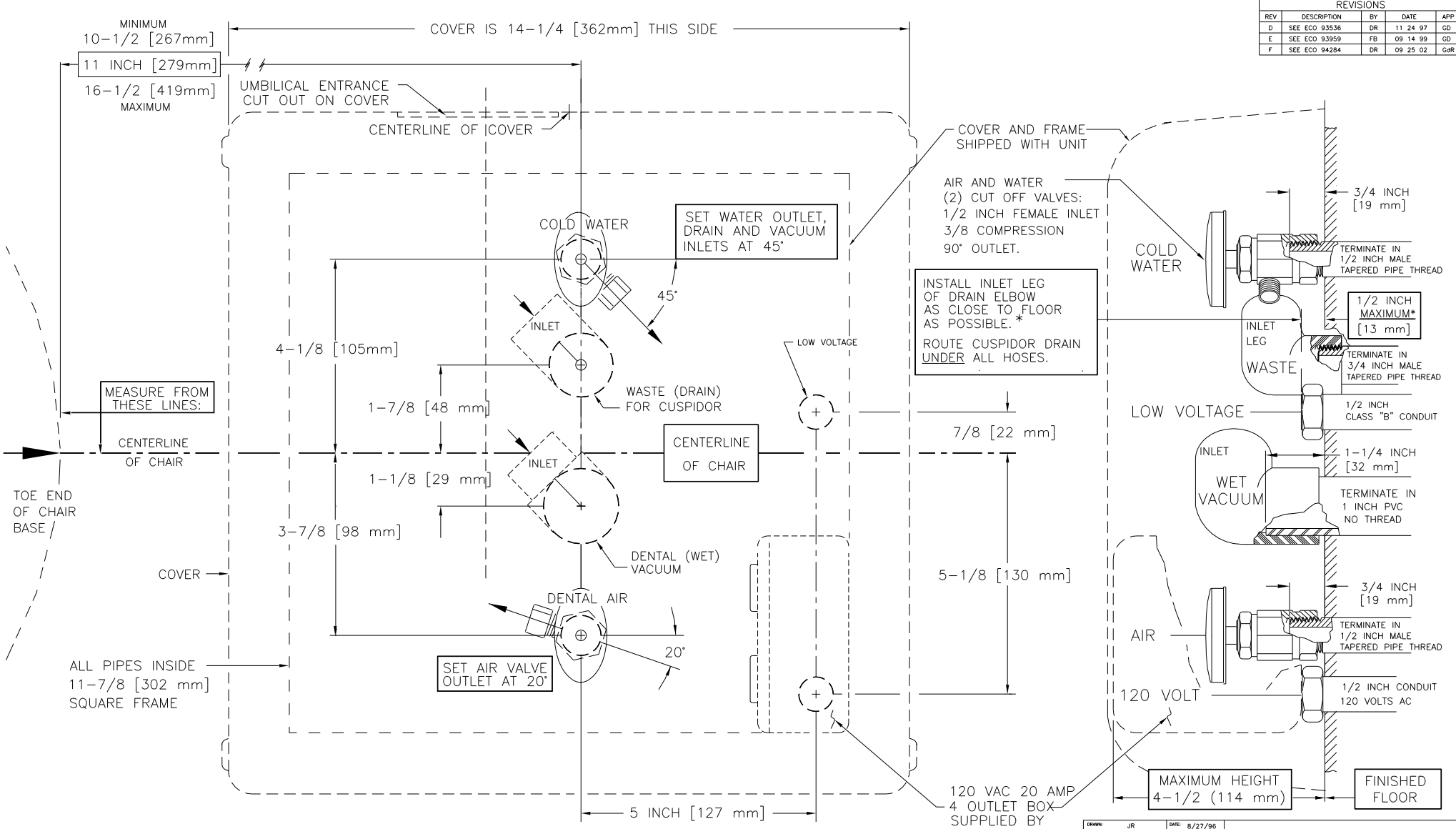


REVISIONS				
REV	DESCRIPTION	BY	DATE	APP
D	SEE ECO 93536	DR	11 24 97	GD
E	SEE ECO 93959	FB	09 14 99	GD
F	SEE ECO 94284	DR	09 25 02	GDR



- 4 PLUMBING AND ELECTRICAL SERVICES MUST COMPLY WITH LOCAL BUILDING CODES.
- 3 FALIURE TO FLUSH AIR AND WATER LINES BEFORE INSTALLATION MAY VOID EQUIPMENT WARRANTY.
- 2 SOME MODELS DON'T NEED ALL UTILITIES SHOWN. SEE DENTAL DEALER FOR DETAILS.
- 1 LOCATE PLUMBING AND ELECTRICAL SERVICES FROM CHAIR BASE. CHAIR POSITION TO BE SET BY DENTAL DEALER.

NOTES:

DEALERS INFORMATION:  
1-800-44 PINCH  
1-800-447-4624

120 VAC 20 AMP  
4 OUTLET BOX  
SUPPLIED BY  
CONTRACTOR

DRAWN: JR	DATE: 8/27/96	
CHECKED: GD	DATE: 12/4/97	
UNLESS NOTED: - DIMENSIONS IN INCHES AND [millimeters] - BREAK EDGES .005-.010 [13-25mm] - MACHINED SURFACES 125 - TOLERANCES		DECIMALS: X .005 FRACTIONS: 1/16 ANGLES: 1°
INFORMATION HEREON IS THE CONFIDENTIAL PROPERTY OF PRIMA. IT MAY NOT BE USED OR DISCLOSED WITHOUT PRIOR WRITTEN CONSENT.		TITLE: FLOOR UTILITY BOX TEMPLATE 750 KINGSHILL PL. CARSON, CA 90746 310 327 0035
NEXT ASSY: - REQ: ONE SCALE: 1 / 1	DWG NO: 5052005	SIZE: D SHEET: 1 of 1 REV: 1

ACAD: 5052005F

5052005